

USE THE MAP TO BRAINSTORM THE BEST ROUTE FOR YOUR JANE'S WALK !

SCHOMBERG

## LOCATIONS:

- 1.
- 2.
- 3.
- 4.
- 5.
- 6.
- 7.
- 8.
- 9.
- 10.



Ready to get walking?

Jane's Walk King Township





USE THE MAP TO BRAINSTORM THE BEST ROUTE FOR YOUR JANE'S WALK !

NOBLETON

## LOCATIONS:

- 1.
- 2.
- 3.
- 4.
- 5.
- 6.
- 7.
- 8.
- 9.
- 10.

Ready to get walking?

Jane's Walk King Township





USE THE MAP TO BRAINSTORM THE BEST ROUTE FOR YOUR JANE'S WALK !

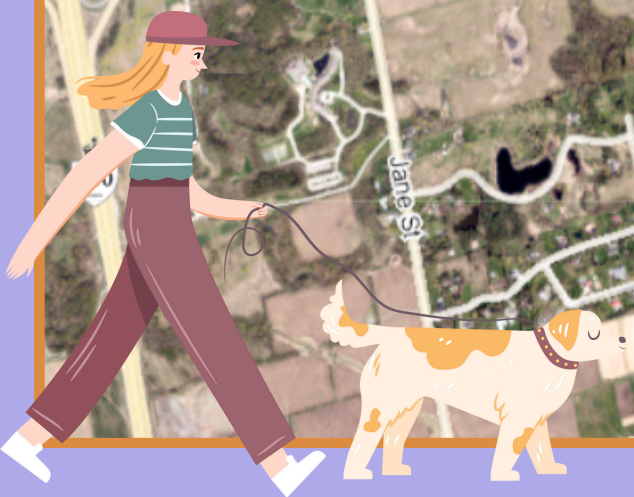
KING CITY

LOCATIONS:

- 1.
- 2.
- 3.
- 4.
- 5.
- 6.
- 7.
- 8.
- 9.
- 10.

Ready to get walking?

Jane's Walk King Township



# USE THE QUESTIONS TO THINK ABOUT TOPICS FOR YOUR JANE'S WALK !



How are youth in King shaping the future of our community?

How would youth like to be engaged in municipal planning?



**Ready to get walking?**

Jane's Walk King Township





# USE THE QUESTIONS TO THINK ABOUT TOPICS FOR YOUR JANE'S WALK !



Does King do a good job providing "third places" for young people?

Can you share any examples of youth-friendly spaces in King?



**Ready to get walking?**

Jane's Walk King Township





# USE THE QUESTIONS TO THINK ABOUT TOPICS FOR YOUR JANE'S WALK !



What's it like being  
a young person  
growing up in  
King?

If everyone in King  
came to hear you  
speak, what would  
you say?



**Ready to get walking?**

Jane's Walk King Township





USE THIS SPACE TO PLAN OUT YOUR JANE'S WALK!



### Ready to get walking?



JanesWalk-King.ca



JanesWalk.King



JanesWalk.King@gmail.com

